



GAT MONTHLY MEMBERSHIP PROGRESS REPORT

Results as of: 6/30/2023

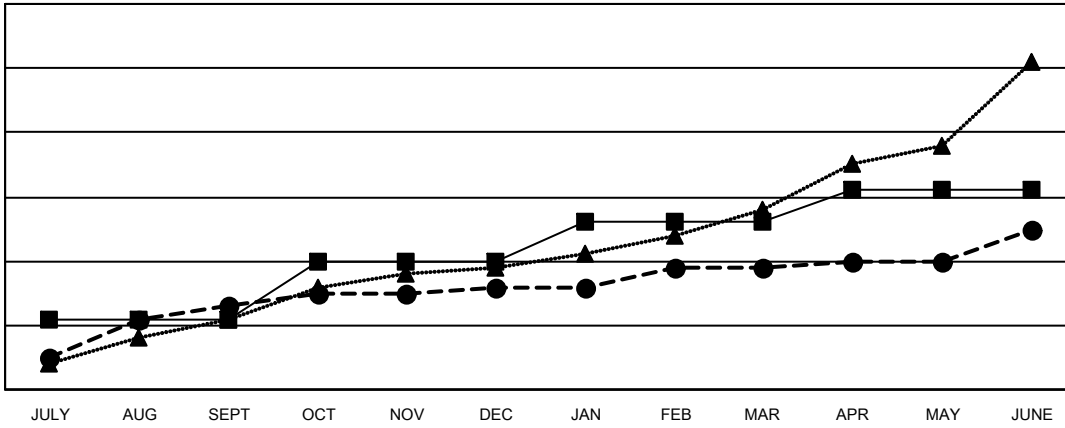
Multiple District 3234

LOCATION: INDIA

Clubs			
RESULTS FOR 2022-2023			
QUARTER	NEW CLUB GOAL	NEW CLUBS	DROPPED CLUBS
JULY/AUG/SEPT	11	13	2
OCT/NOV/DEC	9	3	241
JAN/FEB/MAR	6	3	2
APR/MAY/JUNE	5	6	25

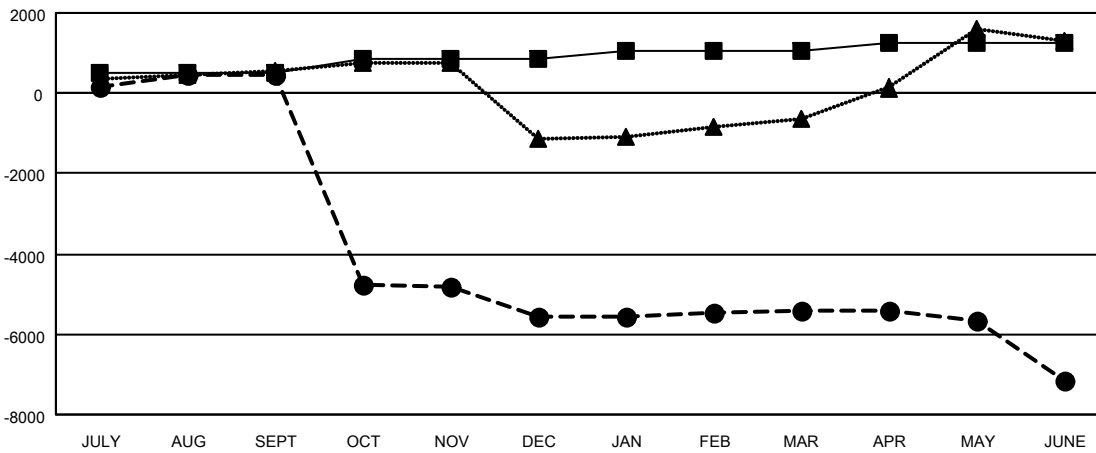
Members			
RESULTS FOR 2022-2023			
QUARTER	MEMBER GROWTH NET GOAL	MEMBER GROWTH ACTUAL	DROPPED MEMBERS ACTUAL (including transfers)
JULY/AUG/SEPT	490	1,033	457
OCT/NOV/DEC	355	299	6,337
JAN/FEB/MAR	190	538	205
APR/MAY/JUNE	200	559	2,221

GOALS AND ACTUAL NEW CLUBS CUMULATIVE



- CURRENT YEAR GOALS FOR NEW CLUBS
- CURRENT YEAR ACTUAL NEW CLUBS
- ▲- LAST YEAR ACTUAL NEW CLUBS

GOALS AND ACTUAL MEMBERS CUMULATIVE



- MEMBER GROWTH NET GOAL
- MEMBER GROWTH ACTUAL
- ▲- LAST YEAR MEMBERSHIP ACTUAL

DROPPED CLUBS: 270	262 CLUBS OF 658 ADDED 1 OR MORE NEW MEMBERS	GENDER DISTRIBUTION
DROPPED MEMBERS	CLICK HERE FOR CUMULATIVE MEMBERSHIP DATA	MALE 10,125 (63.73%)
DECEASED 48		FEMALE 5,761 (36.26%)
CLUB CANCELLED 6,308		NON BINARY 0 (0.00%)
OTHER 2,863		PREFER NOT TO ANSWER 1 (0.01%)
TOTAL 9,219		TOTAL FAMILY UNIT MEMBERS 9,889
		FAMILY MEMBERS PAYING HALF DUES 5,677